



everybody HEARS 

211 S. Apopka Ave.

Inverness, FL 34452

352-726-4327

EverybodyHears.com

WIDEX **ALLURE**™ APP
QUICK GUIDE

WIDEX

SOUND LIKE NO OTHER



THE NEW WIDEX ALLURE APP

THE DIFFERENCE IS CLEAR

With intuitive onboarding, comprehensive help guides, and excellent support of smartphone native accessibility features, the Widex Allure app supports a seamless, inclusive experience.

It's designed to take the frustration out of technology and make connecting simple, empowering you to enjoy effortless control and stay fully connected to the world around you.

Download the app now





PAIRING WIDEX ALLURE WITH YOUR PHONE

APPLE®

1. Ensure Bluetooth is enabled in Settings.
2. Go to Settings › Accessibility › Hearing Devices.
3. Turn your hearing devices off and back on again.
4. Select your hearing aids from MFi hearing devices and press Pair for each hearing aid.
5. Your hearing aids are now paired with your phone and are ready to stream music and calls.
6. Open the app to connect your hearing aids to the app.



211 S. Apopka Ave.
Inverness, FL 34452
352-726-4327
EverybodyHears.com

ANDROID™

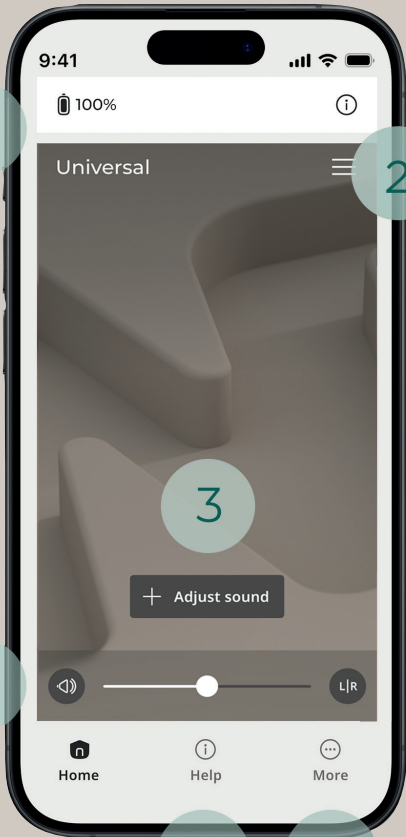
Through the app:

1. Turn your hearing aids off and on again. This puts them in pairing mode.
2. Open the Allure app and select Open Connection Guide.
3. Follow pairing instructions provided by the in-app guide.

Through the phone:

1. Go to Settings › Connections › Bluetooth.
2. Turn your hearing aids off and on again. This puts them in pairing mode.
3. Find and pair each hearing aid under available devices.
4. When a popup titled Bluetooth pairing request appears, select Pair.
5. Your hearing aids are now paired with your phone and are ready to stream music and calls.
6. Open the app to connect your hearing aids to the app.

WIDEX ALLURE APP HOME SCREEN



STAY CONNECTED

1. Battery status: Check the battery and connection status via a phone or Apple Watch.
2. Change program: Easily switch between programs depending on the environment.
3. Easily customize sound with tools like AI Quick Assistant, Directional Focus, and Equalizer.
4. Surrounding volume level: Adjust volume level, mute the microphone, or change Right/Left volume for a tailored hearing experience.
5. Help and troubleshooting: Easy-to-follow installation and pairing instructions, including video guides.
6. Other features: Include the Find My Hearing Aids function and more.



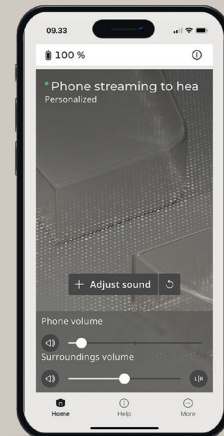
STREAM DIRECTLY TO YOUR HEARING AIDS

Hear phone calls, music, and everything else from your phone directly in your Allure hearing aids. In the app, adjust the balance between stream and surroundings.

How-to guide:

Control the audio streaming volume from the phone, and the surrounding volume directly from the app.

1. Start an audio stream using your favorite audio app on your phone.
2. Go to the Allure app home screen and see the two volume sliders.
3. Adjust the Phone volume slider to control the level of the audio coming from the phone.
4. Adjust the Surrounding volume slider to control the level of the sound coming in through the microphone on the hearing aids.
5. Select the Adjust sound button to set the equalizer to perfect the sound profile when streaming audio. The profile will be remembered for the next time you stream audio from the phone.



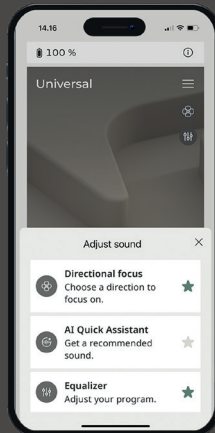
CUSTOMIZE THE SOUND

Adjust your hearing aids to sound exactly how you want them to. You can make the adjustments temporarily or save them permanently to a personal program you want to keep in the Allure app.

How-to guide:

On the Home screen, there is a button in the middle labeled Adjust sound. When you tap the button, the following features are shown:

1. The Directional Focus feature lets you choose where you want your hearing aids to focus (only available in the Universal program).
2. The AI Quick Assistant feature lets you quickly modify the current sound settings to fit your activity.
3. The Equalizer feature lets you adjust the level of specific frequencies.
4. By selecting the star next to the feature, it will pin a shortcut for that feature to the home screen, allowing even easier access.



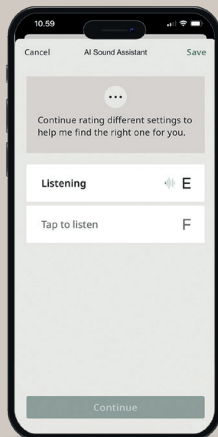
AI SOUND ASSISTANT

With the help of our AI Sound Assistant, you can create personalized programs that are easy to switch between. With easy-to-follow instructions, a more personalized hearing experience is only a few clicks away.

How-to guide:

Fine-tune sound settings for specific situations and save them as personalized programs for future use.

1. Go to the program overview and select the AI Sound Assistant at the bottom to get help finding a sound profile to your liking.
2. Select a suitable situation for which you need the program, e.g. Dining.
3. Select what you want to optimize for, e.g. Conversation.
4. Listen to the two sound profiles presented and rate them. The better rated stays as the new preferred. Continue until you are satisfied and save the program.



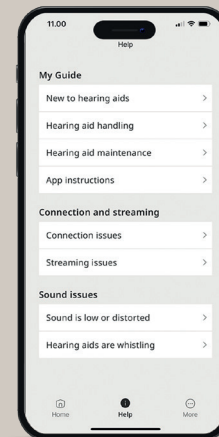
HELP AND TROUBLESHOOTING

Watch video guides, get instructions, find solutions to issues you may experience, and get help finding your hearing aids if they're lost.

How-to guide:

At the bottom of the app, you can find the Help and About topic buttons.

1. In the Help topic section, you can access guides on My Guide, Connection and Troubleshooting, and Sound Issues.
2. Under each topic, you will find a wealth of information about hearing, hearing aid troubleshooting, and fixing sound issues.
3. In the About topic section, you can find tools to set up your hearing aids and the app.
4. You can also find the Find my hearing aid feature. This allows you to see where your hearing aids were last connected to the app and search for them via Bluetooth.



TROUBLESHOOTING

If you experience problems with pairing:

- Check that Bluetooth is activated and that the hearing aids are close to your phone.
- Charge the hearing aid batteries.
- Turn your hearing aids off and then on again. The hearing aids are in pairing mode for the first three minutes after they have been turned on.
- Turn Bluetooth off and on again on your phone and let the hearing aids connect to the phone.
- Make sure that the Widex Allure app has access to Bluetooth. Go to phone Settings > Apps > ALLURE app and activate Bluetooth.

If it still doesn't work:

- Unpair and re-pair your hearing aids.
- Close the Widex Allure app if it's active.
- Restart your phone.
- Restart your hearing aids and start over with the pairing process.

If you experience streaming problems with iOS:

- In your phone go to Settings > Accessibility > Hearing Aids and verify that the hearing aids are paired with the phone.
- Go to Settings > Accessibility > Hearing Devices > Audio Routing. Make sure that Call Audio and Media Audio are both set to Automatic or Always Hearing Devices.
- Turn Bluetooth off and on again on your phone and let the hearing aids connect to the phone.
- Make sure your phone has a good quality Wi-Fi or mobile network connection.

**Scan the QR code
for more information**



everybody HEARS 

211 S. Apopka Ave.

Inverness, FL 34452

352-726-4327

EverybodyHears.com



SOUND LIKE NO OTHER

Widex is a registered trademark of WSAUD A/S.
WX-21718/0425

The Bluetooth® word mark and logos are owned by the Bluetooth SIG, Inc. and any use of such marks by WSAUD A/S is under license. Other trademarks and trade names are those of their respective owners.

Apple, the Apple logo and iPhone are trademarks of Apple Inc., registered in the U.S. and other countries. App Store is a service mark of Apple Inc. Android, Google Play and the Google Play logo are trademarks of Google Inc.

LEARN MORE AT WIDEX.COM